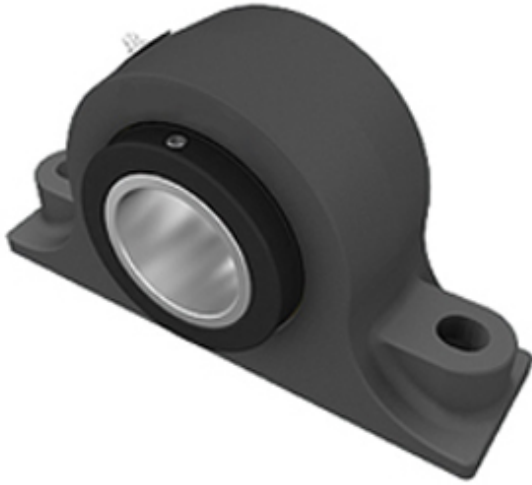




Machinery Parts Bearing Manufacturing

3.5 Inch | 88.9 Millimeter x 5 Inch | 127
Millimeter x 3.75 Inch | 95.25 Millimeter TIMKEN
E-P2B-TRB-3 1/2 Pillow Block Bearings



E-P2B-TRB-3 1/2 Bearing 2D drawings and 3D CAD models

Bearing No. E-P2B-TRB-3 1/2

Category	Pillow Block Bearings
Inventory	0.0
Manufacturer Name	TIMKEN
Minimum Buy Quantity	N/A
Weight	19.98
EAN	0053893607450
Product Group	M06288
Number of Mounting Holes	2
Mounting Method	Concentric Collar
Housing Style	2 Bolt Pillow Block
Rolling Element	Tapered Roller Bearing
Housing Material	Cast Iron
Expansion / Non-expansion	Non-expansion
Mounting Bolts	7/8 Inch
Relubricatable	Yes
Seals	Double Lip Radial
Housing Configuration	1 Piece Solid
Inch - Metric	Inch
Other Features	Double Row Wide Inner Race With Set Screw
Long Description	2 Bolt Pillow Block; 3-1/2" Bore; 3-3/4" Base to Center Height; Concentric Collar Mount; Tapered Roller Bearing; 10-13/16" Minimum Bolt Spacing; 11-3/16" Bolt Spacing



Machinery Parts Bearing Manufacturing

	Maximum; Relu
Category	Pillow Block
UNSPSC	31171511
Harmonized Tariff Code	8483.20.40.80
Noun	Bearing
Keyword String	Pillow Block
Manufacturer URL	http://www.timken.com
Manufacturer Item Number	E-P2B-TRB-3 1/2
Weight / LBS	44
Bolt Spacing Minimum	10.813 Inch 274.65Millimeter
D	5 Inch 127 Millimeter
Actual Bolt Center to Center	0 Inch 0Millimeter
d	3.5 Inch 88.9 Millimeter
B	3.75 Inch 95.25 Millimeter
Nominal Bolt Center to Center	11 Inch 280 Millimeter
Bolt Spacing Maximum	11.188 Inch 284.175Millimeter
Shaft Size	3.5 in
Shaft Size Type	Imperial
Weight	44 lb
UPC Code	053893607450
Dimension B	5 in
Dimension L	14 in
Dimension A	3-1/2 in
Dimension J Min.	10-13/16 in
Dimension J Max.	11-3/16 in
Bolt Diameter	7/8 in
Dimension N	1 in
Dimension N ₁	1-3/16 in
Dimension H ₁	2-1/4 in



Machinery Parts Bearing Manufacturing

Dimension H ₂	7-1/2 in
Dimension d ₁	5-17/32 in
Dimension H	3-3/4 in
e	0.50
X (if F _a /F _r ≤ e)	0.87
Y (if F _a /F _r ≤ e)	1.71
X (if F _a /F _r > e)	0.7
Y (if F _a /F _r > e)	2.07
K Factor	1.19
C ₉₀ Dynamic Load Rating ¹	19600 lb
C ₀ Static Load Rating	108600 lb
F _{a-max} Maximum Permissible Thrust Load ²	5181 lb
F _{r-max} Maximum Allowable Slip Fit Radial Load ³	16000 lb
Max. Speed ⁴	1640 rpm
Note	Note: All units have a 1/8 pipe thread grease fitting The Maximum Permissible Thrust Load applies to conditions of slip fit with set screw mounting or in applications where a large moment loading occur